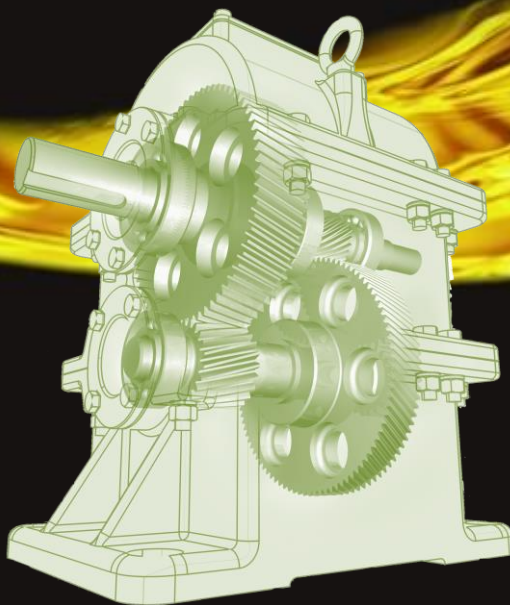




732-651-7070 | [sales@sur-sealinc.com](mailto:sales@sur-sealinc.com)

# INTERFLON

**Interflon customer  
experiences with  
type SEW gearboxes**



MicPol® Lubrication Technology

## Interflon partner Operational Excellence



**This information is based on** experiences of customers with SEW gearboxes and is only intended for internal use.

Besides SEW gearboxes, Interflon customers also have experience with gearboxes from Lense, Leroy Somer, Nord, Swedrive, Flender, Bonfiglioli, Eldi, Motovario, Chiaravalli and Rossi.

### **This is why our customers use Interflon gearbox lubricants.**

Oil lubrication of industrial gearboxes is often associated with leaks and all the accompanying environmental, usage and contamination problems. A new grease solves these problems and also results in energy savings and a lower temperature. Interflon liquid greases have been specially developed for lubricating gearboxes. The special composition of the semi-fluid grease makes it also suitable for machine components with automatic oil and grease lubrication systems.

The grease is fluid like oil, but remains more viscous at the operating temperature. The above reduces the leaking from worn seals in older gearboxes. In 90% of cases, this grease stops leaks from shaft seals without having to dismantle the gearbox. Partly thanks to these properties, much less lubricant is used. Furthermore, Fin Grease MP00 with Teflon<sup>®</sup> forms a stronger lubricating film with less friction than conventional oils and greases. This leads to much less wear and, as a result, longer maintenance intervals. Another advantage of the reduced friction and lower operating temperature is that the system uses less energy.



## Interflon SEW Information



R = Helical Reductor  
Multistage



S = Helical-worm Reductor



W = Spiroplan/ right-angle



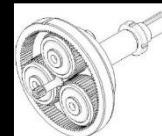
F = Parallel shaft  
reductor



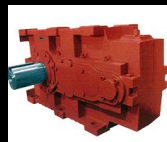
K = Helical Bevel Reductor



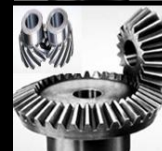
P = Helical-bevel planetary  
Reductor



X = Helical and helical-bevel  
Reductor



MC = helical gear units and  
bevel-helical gear





732-651-7070 | sales@sur-sealinc.com



# Index

From page

- |    |   |
|----|---|
| 5- | Filling information/instructions                |
| 7  | R = Helical Reductor Multistage                 |
| 19 | S = Helical-worm Reductor                       |
| 29 | W = Spiroplan/ right- angle                     |
| 31 | F = Parallel shaft reductor shaft-mounted model |
| 35 | K = Helical Bevel Reductor                      |
| 43 | P = Helical-bevel planetary Reductor            |
| 45 | X = Helical and helical-bevel Reductor          |
| 47 | MC = helical gear units and bevel-helical gear  |
| 49 | Corrugated cardboard factory - 558 gearboxes    |



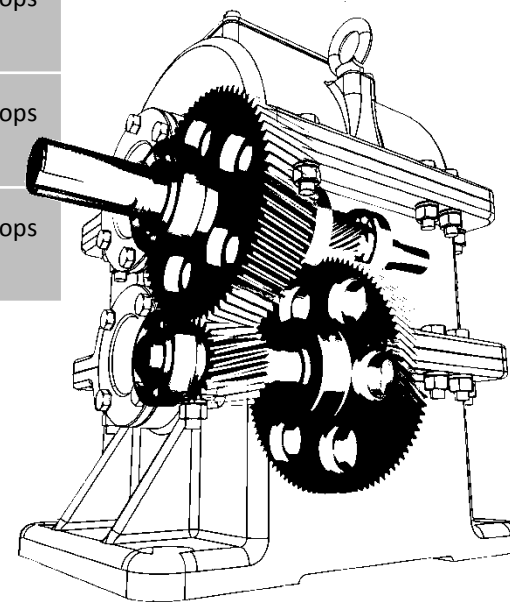
732-651-7070 | sales@sur-sealinc.com

## Information on which lubricants to use and the filling level

PAGE 5



Product	NSF	Advice	Comment	Advantages
Food Lube Series H and G	✓		Maximum viscosity ISO 680	Frequency 2-3 x longer
Finnoly T251 & N251-H & NT500	✗		Stability and miscibility in oil	Frequency 2-3 x longer
Grease MP00	✓		DN Factor $\leq 320,000$	Frequency up to 5 x longer Stops leaks
Food Grease 000	✓		DN Factor $\leq 250,000$	Frequency up to 5 x longer Stops leaks
Food Grease HD00	✓		DN Factor $\leq 350,000$	Frequency up to 5 x longer Stops leaks



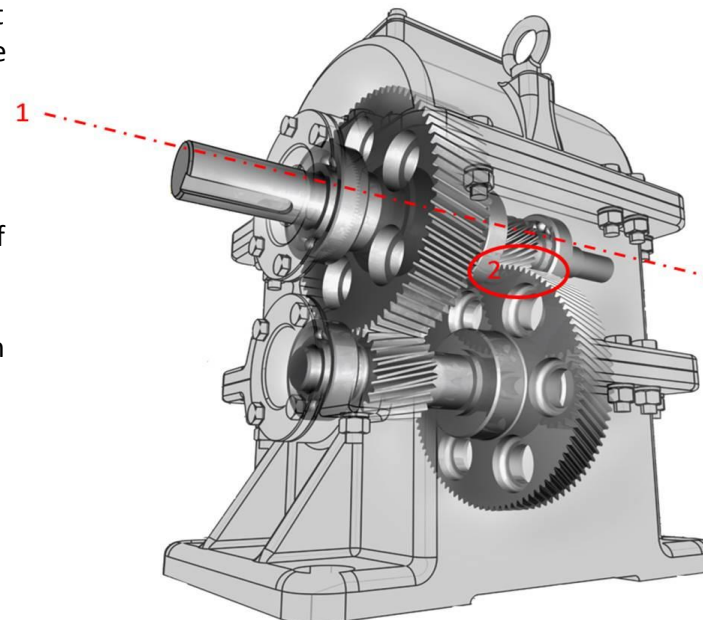
## Filling information/instructions

If there is doubt about the required filling level when using a liquid grease, we recommend following the guidelines given below.

A) Make sure all the contact surfaces of the gears concerned (including the highest series of gears 2) are submerged in the lubricant during use. On account of the slower flow properties of these greases, a groove may be produced in the grease during operation because of the rotational movement, which (in the worst case) may result in damage. This groove must be compensated for in order to avoid damage.

If the bearings are lubricated by internal submerging, you must ensure that  $\frac{3}{4}$  of the total diameter<sup>1</sup> of the top bearings is covered in the liquid grease.

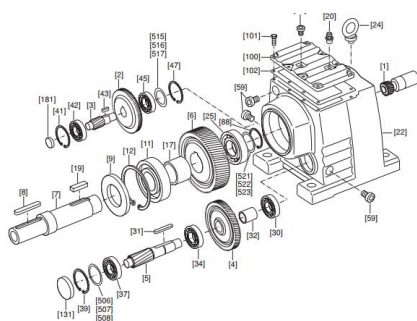
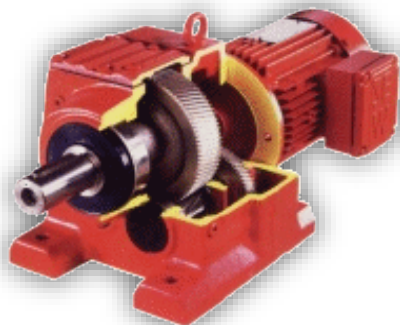
The gearbox's operating temperature may increase slightly if the total free air in the housing is reduced (with regard to the original filling condition) as a result of compensating for the groove (as described in A).



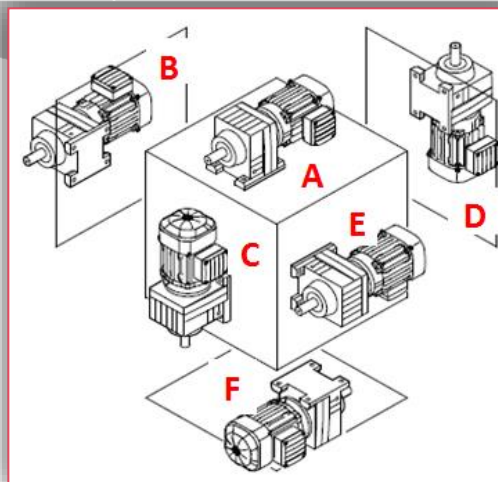


## Application: R = Helical Reductor Multistage

PAGE 7

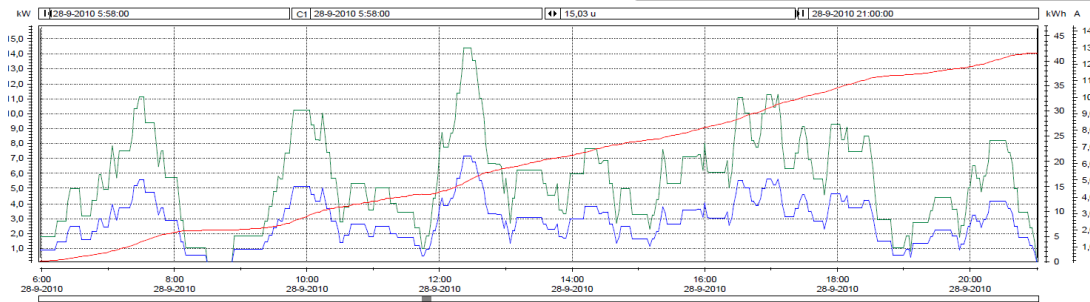


Liquid grease level required for R = Helical Reductor Multistage	
Position A & F	<b>+ 10% more than the recommended level</b>
Position B & E	<b>+ 10% more than the recommended level</b>
Position C & D	<p><b>The grease level must remain 10 mm below the covering plate.</b></p> <p><b>If the top bearings are lubricated, use the recommended level</b></p>

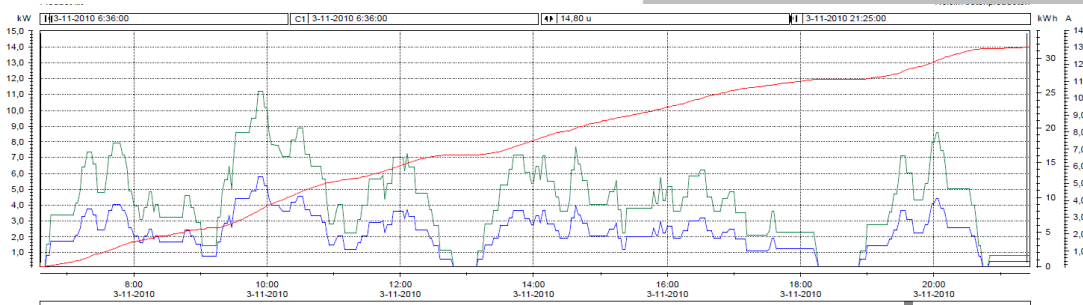


## Application: R133 180 m

PAGE 8



Grafiek 3: meting zonder Interflon productlift



Grafiek 4: meting met Interflon product productlift

### Application

To reduce the energy consumption of a product lift.

### Company information

Holcim concrete products.

### Solution

**Interflon Grease MP00**

### Result:

- Energy consumption measured with a data logger for 1 month without Interflon and 1 month with Interflon.
- Example graph shows the measurements of one day
- An energy saving of 15%.
- A longer service life.



## Application: R 137/112D DV 180 L

PAGE 9



### Calculation

24 x 7 x 50 weeks = 6,000 annual operating hours.

Motor power at full load is 75 kW  
= 75 kWh x 9.7% = 7.275 kWh  
energy saving per operating hour.  
6,000 operating hours x 7.275  
kWh = 43,650 kWh energy saving  
per year x € 0.09 = € 3,928.50.

**27,500 kg CO2 saving**

### **Application**

To reduce the energy consumption and to reduce leaks from the ribbon blender ME1.

Gearbox type: R 137/112D DV 180 L 4/113D. P= 22 kW. n1= 1,465 rpm.  
n2= 67 rpm. Volume: 20 litres

### **Company information**

Rijnvallei animal feed production.

### **Solution**

**Interflon Grease MP00**

### **Result**

The average weekly current consumption (5 days) before adding Interflon was 45.5 Ampere.

The average weekly current consumption after adding the Interflon product **Interflon Grease MP00** is 41.1 Ampere.

This equals an energy saving of 9.7 %.

### **Result:**

- An energy saving of 9.7%.
- Longer tool life
- No leaks.
- Fewer maintenance hours.
- An annual saving of € 3,928.

## Application: R107-DV180-M4 + R143-DV180-M4

PAGE 10



### Application

To save energy and reduce the leaks from the transport systems.

1 = Elevator E04

Type: R107-DV180-M4

Temp. Reductor: 29 °C

Engine capacity: 18.5KW 37a

Volume: 6 litres

Existing product: ISO VG 220



2= Transport bunker drive

Type: R143-DV180-M4

Engine capacity: 18.5KW 39A

Volume: Approx. 6 litres

Existing product: ISO VG 220

### Company information

Animal feed production.

**Current product ; 220 oil**

### Solution

**Interflon Grease MP00**

### Result:

- An average energy saving of 10%.
- Longer tool life
- No leaks.
- Fewer maintenance hours.

## Application: R13 + R140 + R87

PAGE 11



### Application

To save energy and reduce the leaks from the transport systems.

Drive unit

1-Make: Type: R133-DT180-M4

Motor power: 11KW 22A

2-Make: Type: R140-D180-M4

Motor power: 22KW 43A

3-Drive 605+606

Make: 6 x Type: R87-DV100-M4

Motor power: 2.2KW 4.9A

Volume: 6.3 litres

Existing product: ISO VG 220



### Company information

Animal feed production.

### Current product

220 oil

### Solution

**Interflon Grease MP00**



R87-DV100-M4

### Result:

- An average energy saving of 10%.
- Longer tool life
- No leaks.
- Fewer maintenance hours.

## Application: R92a

PAGE 12



### Application

Fewer leaks from the magnetic drum.

The gearboxes must be overhauled every 3 years.

Drive unit

Make: SEW Type: R92A

Motor power: 5.5 KW

### Company information

Feniks Recycling

### Current product

Texaco Meropa 320

### Solution

**Interflon Grease MP00**



### Result

- Fewer leaks.
- Service life has tripled.
- Fewer maintenance hours.
- SEW KA86 also filled with Interflon Grease MP00.

## Application: R 57

PAGE 13



### Application

To save energy and reduce the leaks from the cheese transport system.

Drive unit

Make: SEW Type: R57

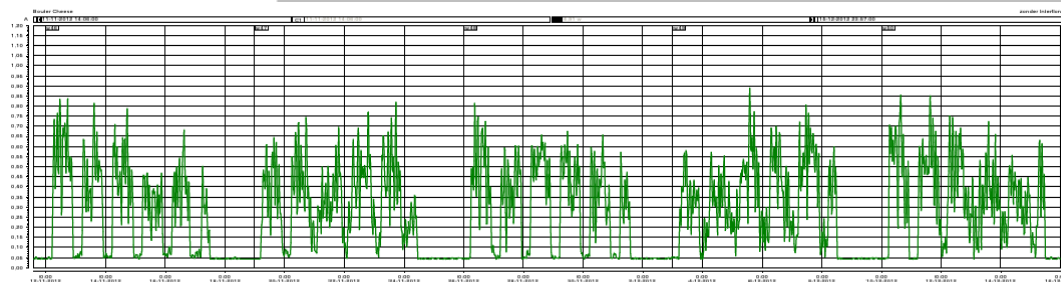
### Company information

Bouter Cheese

Current product ;220 oil

### Solution

Interflon Food Grease HD00



### Result

- Fewer leaks.
- Longer service life.
- Fewer maintenance hours.
- An energy saving of 10%.



## Application: R Series

PAGE 14



### Application

Various R gearboxes in this food-processing company.

Problem MSC Mixer.

- Many oil changes.
- R series often once every 3 weeks.
- No NSF H1 product.

Drive unit

Make: SEW Type: R series.

### Company information

Pilgrims Pride Sanford, NC Plant

### Current product

CRC Sta-Lube Gear Oil SAE 80W90 (**not a food-grade product**)

### Solution

**Interflon Grease MP00**



### Result

- From a grease change once every 3 weeks to once every 63 weeks.
- Fewer maintenance hours.
- Food-grade lubricant.
- Cost saving
- Payback period is 4 months.



## Application: R 60 - R27 – R73 LP

PAGE 15



### Application

Various gearboxes in this food-processing company.  
Filter feed tank.

- Regular oil changes.
- Leaks.

Drive unit

Make: SEW Type: R60  
R27  
R73 LP

### Company information

Kerry NL foodstuff manufacturer

### Current product

Cassida 220/240

### Solution

**Interflon Grease HD00**



### Result:

- For this customer, the most important result was that there are no more leaks in the food-processing environment.

## Application: R902 LP + RF40 + R73

PAGE 16



Filter feed tank SEW R 902 LP



Filter feed tank SEW RF 40



Filter feed tank conical screw mixer  
SEW R73

### Application

Various gearboxes in this food-processing company.  
Filter feed tank.

- Regular oil changes.
- Leaks.

Drive unit

Make: SEW Type: R902 LP  
RF40  
R73

### Company information

Kerry NL foodstuff manufacturer

### Current product

Cassida 220/240

### Solution

**Interflon Grease HD00**

### Result:

- For this customer, the most important result was that there are no more leaks in the food-processing environment.

## Application: RXF 61 + R62 + R 63

PAGE 17



Protein SEW RXF 61



Protein SEW R62 LP



Protein SEW R63 LP

### Application

Various gearboxes in this food-processing company.  
Protein line.

Problem;

- Regular oil changes.
- Leaks.

Drive unit

Make: SEW Type: RXF 61  
R62  
R63

### Company information

Kerry NL foodstuff manufacturer

### Current product

Cassida 220/240

### Solution

**Interflon Grease HD00**

### Result:

- For this customer, the most important result was that there are no more leaks in the food-processing environment.

## Application: R43 + RXF 77

PAGE 18



Calcium tank SEW R43



Sewer station SEW RXF 77

### Application

Various gearboxes in this food-processing company.

Calcium tank and sewer station

- Regular oil changes.
- Leaks.

Calcium tank drive

Make: SEW Type: R43

Sewer station drive

Make: SEW Type: RXF 77

### Company information

Kerry NL foodstuff manufacturer

### Current product

Cassida 220/240

### Solution

**Interflon Grease HD00**

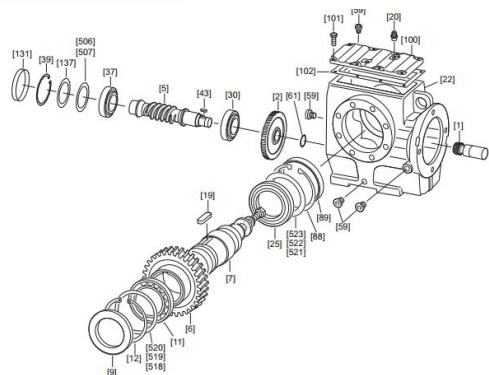
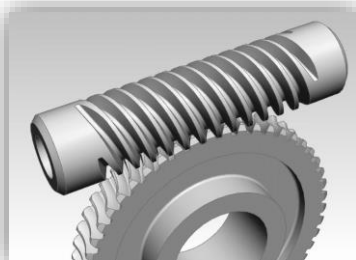
### Result:

- For this customer, the most important result was that there are no more leaks in the food-processing environment.



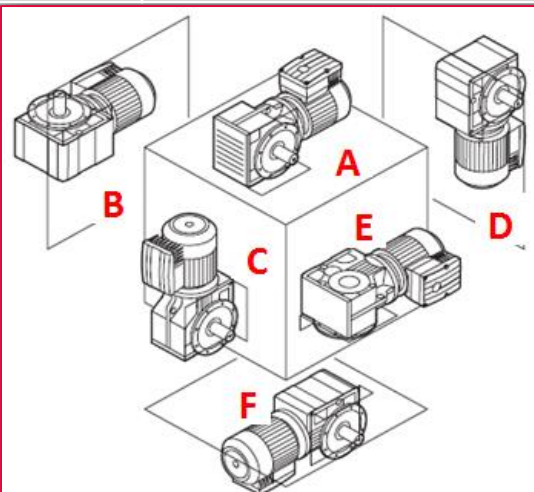
## Application: S = Helical-worm Reductor

PAGE 19



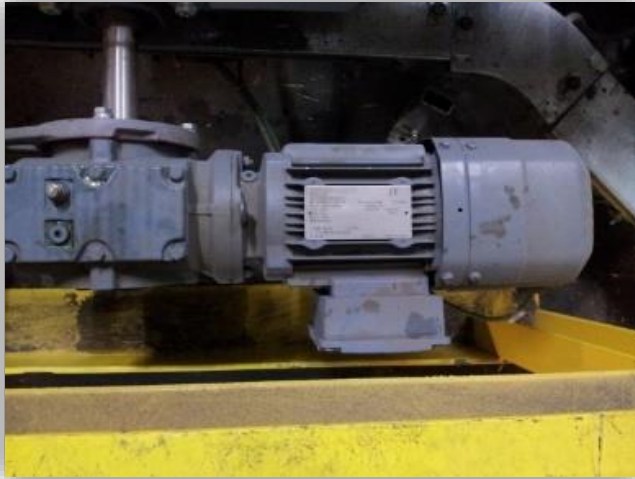
### Liquid grease level required for S = Helical-worm Reductor

Position A Top worm	Fill to the contact surface between the crown and the worm
Position B & E Horizontal worm gear	The grease level must be 10 mm below the top covering plate
Position C & D Vertical worm	The grease level must be 10 mm below the top covering plate
Position F Bottom worm	Fill to the contact surface between the crown and the worm



## Application: SA 57

PAGE 20



### Application

Various gearboxes in this food-processing company.

Box transport system.

- Regular oil changes.
- Leaks.
- Regular faults.

Transport system drive.

Make: SEW Type: SA57 DT90

### Company information

Henkel Germany

### Current product

CLP 680

### Solution

**Interflon Grease MP00**

### Result:

- No failure anymore
- Service life of liquid grease is 6-8 years.
- An energy saving of 30%.



## Application: SA47 Gearbox Crate line

PAGE 21



**Problem;** SEW SA47/T DRS74M4

Moisture, corrosion and leaks. Oil leaks from gearboxes cause a problem in this type of environment.

**Environment;**

Varying temperatures, high relative humidity and a lot of water.

**Product used;**

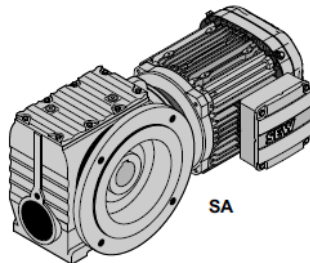
Mobil SHC Gear 220.

**Solution;**

Interflon Grease MP00

**Advantages**

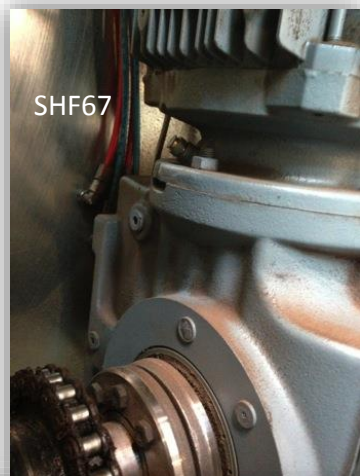
- Liquid grease.
- Longer service life.
- Energy saving
- Significant reduction in friction and wear and tear
- Suitable for use in HACCP environments (NSF-H1).



- **Result:**
- Fewer oil changes.
- No leakage
- Longer tool life
- Less disposal of old oil.

## Application: SHF67 + SA47

PAGE 22



SHF67



SHF67



SA47

### Application

Drive system in a coffee-producing factory.

- Regular oil changes.
- Not reliable.

1-Transport system drive.

Make: SEW Type: SHF67DRE100M4BE5HR/TF/V

Input speed: 1,425 rpm

Output speed: 53 rpm, 26.93

2-Transport system drive.

Make: SEW Type: SA47/T DRS80S4BE2

Input speed: 1,400 rpm, output speed: 57 rpm, 24.77

### Company information

ESPRESSO coffee producer

### Current product

CLP 680

### Solution

**Interflon Grease MP00**

### Result:

- Reliable.
- No leaks.

## Application: SAF 47

PAGE 23



### Application

To save energy on various gearboxes used in this company.

Example

Drive for 10 mixing drums for the fluorescent powder.

Make: SEW Type: SAF47 DT80N4

### Gearbox properties:

- Input speed/output speed = 1,380/78 rpm.
- Nominal torque = 81 Nm.
- Deceleration I = 17.62
- Motor power = 0.75 kW
- Dn factor =  $1.5 \times \text{shaft diameter} \times \text{motor rotational speed} = 1.5 \times 12 \times 1,380 = 24,840 \text{ [mm/min]}$

### Company information

OSRAM Italy lights/lighting manufacturer

### Current product

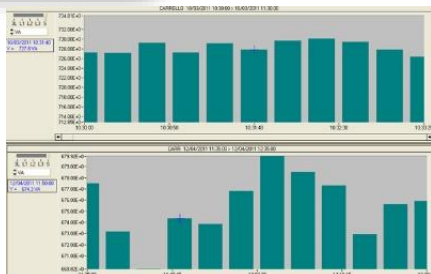
CLP 680

### Solution

**Interflon Grease MP00**

### Result:

- An energy saving of 11%.
- Payback period 6 months



## Application: S Series

PAGE 24



### Application

Fewer maintenance hours and fewer leaks in the total production facility and various gearboxes.  
Oil change interval is 3 years according to the Shell lubrication instructions.

### Company information

Coca Cola soft drink manufacturer NL- BE

### Current product

Shell Cassida 220 / 460 / 680

### Solution

**Interflon Grease MP00**



### Result

- Service life increased from 3 years to 10 years.
- Fewer maintenance hours
- No leaks.
- No downtime.



## Application: S Series

PAGE 25



There are approximately 1,000 gearboxes ranging from 0.75 kW to 2.2 kW.  
Service life of Shell Cassida 460 oil is 3 years.

Production hours per year: 5,760 Price: € 0.12 per kWh  
Energy consumption was 5,760,000 kWh per year.

**€ 691,200**

1,000 litres Shell Cassida 460 every 3 years.

Price per litre: € 10.80

Cost per year: 333 litres x € 10.80 **€ 3,597**

Oil change: 0.5 hours a time.

Specified hourly rate: € 14.70.

Specified oil changes: 167 x € 14.70 **€ 2,455**

Current costs **€ 697,252**

### New situation

Service life of Interflon Fin Grease MP 00 is 10 years.

- 2% energy saving **€ 677,376**

1,000 litres Interflon Grease MP 00

Price per litre: € 26.80.

Cost per year: 100 litres x € 26.80 **€ 2,680.**

Oil change: 50 x € 14.70

**€ 735**

New cost calculation

**€ 680,791**

**Annual saving: € 16,461.00**

## Application: SA 87

PAGE 26



### Application

More than 200 gearboxes in this foodstuff company.  
Conveyor system

- Regular oil changes.
- Leaks.
- High energy consumption.

Drive unit. Production lines operate for three shifts a day, five days a week.

Make: SEW Type: SA87

### Company information

Foodstuff manufacturer.

### Current product

Standard ISO VG 220 oil.

### Solution

**Interflon Grease MP00**

### Result:

- Energy saving of 5 %.
- Longer oil service life.
- Small gearboxes have life-long lubrication.

		Consumo			Coseno $\delta$	Potencia	Reducción consumo
		R	S	T			
Salida Encajonadora	402M1	0,74A	0,77A	0,81A	0,7	0,3562 KW	5.6%
Salida Plastificadora	400M1	0,71A	0,68A	0,7A	0,7	0,321 KW	5%
Tramo rodillos 1	403M1	0,74A	0,77A	0,75A	0,7	0,347 KW	5,00%
Ascensor	404M1	1,23A	1,28A	1,29A	0,73	0,6085 KW	4,28%

Potencia (W)= (Imedia)\*cos fi\*380/raíz de 3



## Application: SA62

PAGE 27



### Application 1

Packing department transport system - butterfly conveyor.

- Regular oil changes.
- Leaks.
- High energy consumption.
- Temperature 44 degrees Celsius.

### Application 2

Transport system after the capper.

- Regular oil changes.
- Leaks.
- High energy consumption.
- Temperature 42.5 degrees Celsius.

Make: SEW Type: SA62

### Company information

Mars Food Europe CV Food manufacturer

### Current product

Standard ISO VG 220 oil.

### Solution

**Interflon Grease MP00**

### Result:

- Energy saving of 9 %.
- Temperature reduction 8-10%.
- Longer intervals.

## Application: SA67

PAGE 28



Motornummer 175010 Vector SA67

### Application 1

Packing department transport system.

- Regular oil changes.
- Leaks.
- High energy consumption.
- Temperature 67.4 degrees Celsius.

### Application 2

- Leaks.
- High energy consumption.
- Temperature 39 degrees Celsius.

Make: SEW Type: SA67

### Company information

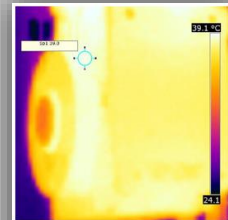
Mars Food Europe CV Food manufacturer

### Current product

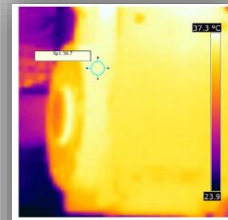
Standard ISO VG 220 oil.

### Solution

**Interflon Grease MP00**



1<sup>ste</sup> meting 39,0 °C



2<sup>de</sup> meting 36,7 °C

### Result application 1

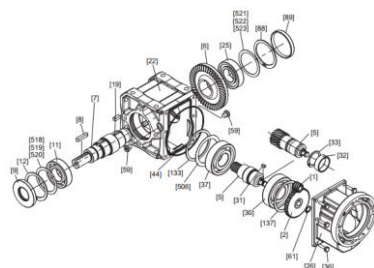
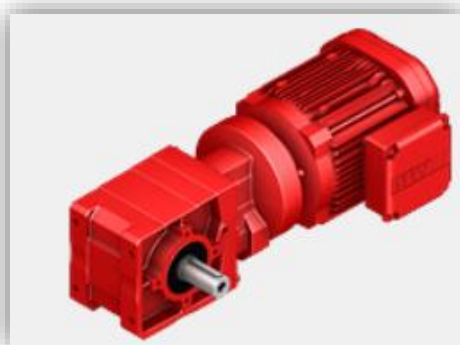
- Energy saving of 23 %.
- Temperature reduced to 49.5 degrees Celsius.

### Result application 2

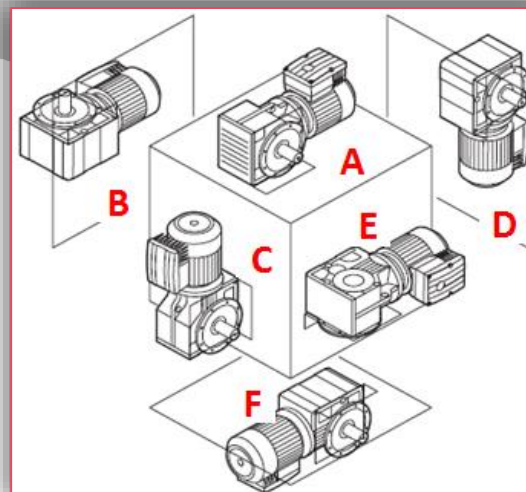
- An energy saving of 11%.
- Temperature reduction of 8%.

# Application: W = Spiroplan / right-angle

PAGE 29

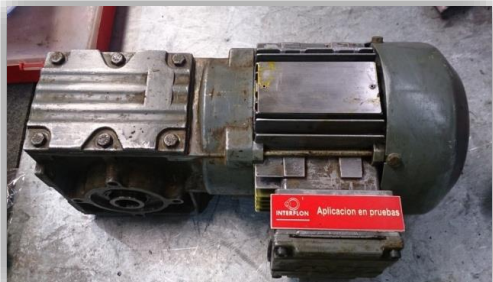


Liquid grease level required for W = Spiroplan / right-angle	
Position A & F	+ 10% more than the recommended level
Position B & E	80% volume if the bearings <u>are not</u> lubricated with grease. 50% + volume if the bearings are lubricated with grease.
Position C & D	⚠ the reductor + 20% of the specified level when fitted at 45°.
Right-angle	The same as the recommended level.



## Application: W

PAGE 30



Visual inspection of the oil and any contamination.



Certain that no oil or metal residue is left behind.

### Use

Gearboxes in the production process.

Make: SEW Type: W

### Company information

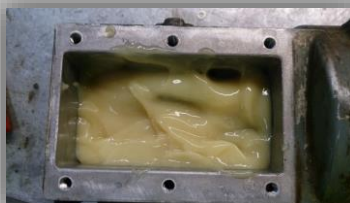
PROSEAT, manufacturer of car seats for well-known makes of car.

### Current product

Standard ISO VG 220 oil.

### Solution

**Interflon Grease MP00**



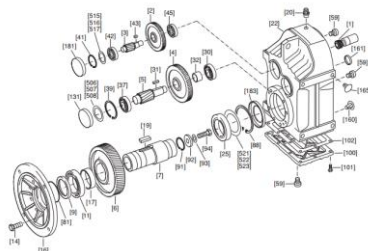
### Result

- No leaks.
- Longer tool life.

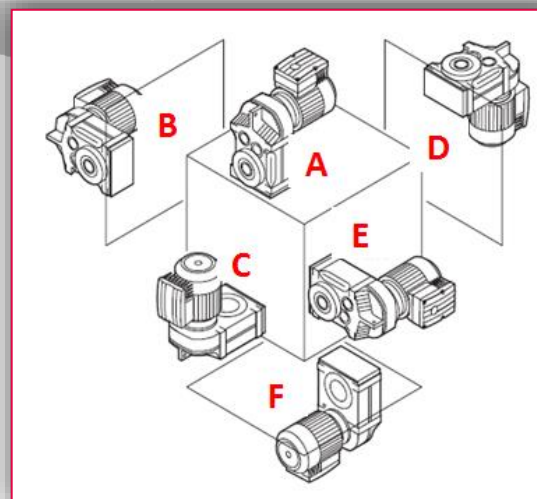


## Application: F = Parallel shaft shaft-mounted model

PAGE 31



Liquid grease level required for F = Parallel shaft shaft-mounted model	
Position A & F	The same as the recommended level
Position B & E	The same as the recommended level The same as the recommended level
Position C & D	The same as the recommended level



## Application: FAF 40

PAGE 32



Filter feed tank



Protein tank

### Use

Various gearboxes in this food-processing company.  
Filter feed tank and protein tank.

- Regular oil changes.
- Leaks.

Drive unit

Make: SEW Type: FAF40

### Company information

Kerry NL foodstuff manufacturer

### Current product

Cassida 220/240

### Solution

**Interflon Grease HD00**

### Result:

- For this customer, the most important result was that there are no more leaks in the food-processing environment.



## Application: FAF 60

PAGE 33



### Use

Various gearboxes in this food-processing company.

Agitators

- Regular oil changes.
- Leaks.

Drive unit

Make: SEW Type: FAF60

### Company information

Kerry NL foodstuff manufacturer

### Current product

Cassida 220/240

### Solution

**Interflon Grease HD00**

### Result:

- For this customer, the most important result was that there are no more leaks in the food-processing environment.

## Application: FAF 70

PAGE 34



### Use

Various gearboxes in this food-processing company.  
Tank agitators.

- Regular oil changes.
- Leaks.

Drive unit

Make: SEW Type: FAF70

### Company information

Kerry NL foodstuff manufacturer

### Current product

Cassida 220/240

### Solution

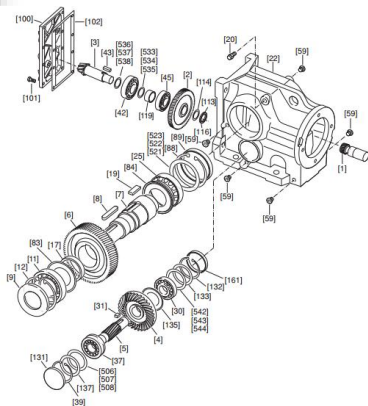
**Interflon Grease HD00**

### Result:

- For this customer, the most important result was that there are no more leaks in the food-processing environment.

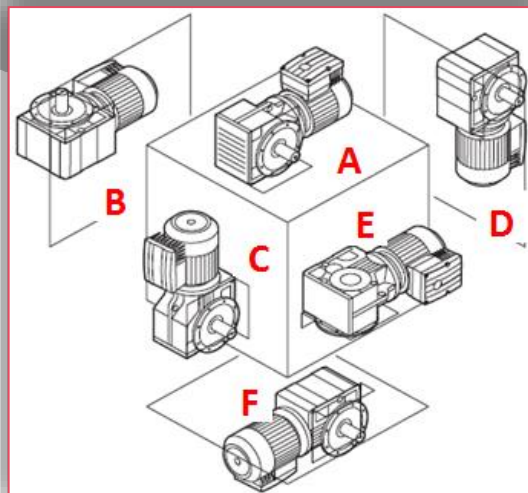
## Application: K = Helical Bevel Reductor

PAGE 35



### Liquid grease level required for K = Helical Bevel Reductor Helical Bevel Reductor

Position A & F	<b>+ 10% more than the recommended level</b>
Position B & E	<b>The grease level must remain 10 mm below the covering plate.</b>  <b>If the top bearings are lubricated, use the recommended level</b>
Position C & D	<b>Fill the reductor to 80% (to half of the highest shaft)</b>



## Application: K77

PAGE 36



### Use

Gearbox K77 of de depanner.

- Regular oil changes.
- Leaks.
- Wears quickly and has to be replaced regularly.

### Drive unit

Make: SEW Type: K77 DT90

Shaft diameter is 50 mm

Maximum rotational speed of the  
outgoing bearing is  
35 rpm (runs at 73 Hz).

### Company information

Driehoek confectionery manufacturer

### Current product

460 standard oil

### Solution

**Interflon Grease MP00**

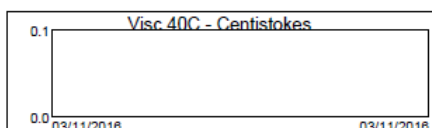
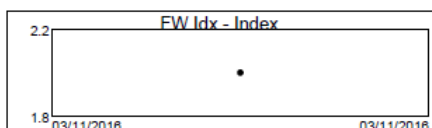
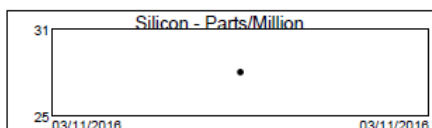
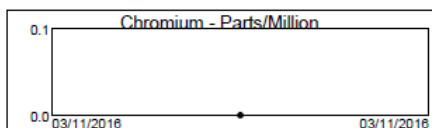
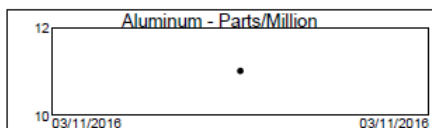
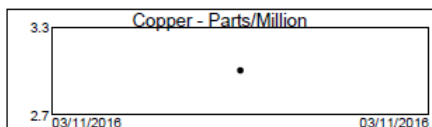
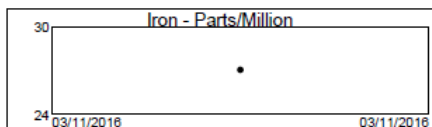


### Result

- No leaks.
- No more wear observed.

## Application: KH77

PAGE 37



Oil analysis after 6 years for trolley 1

### Use

Gearbox KH77 of the Gripper Trolley

- Regular oil changes.
- Many leaks.

Drive make: SEW Type: KH77- BDV  
2 items.

### Company information

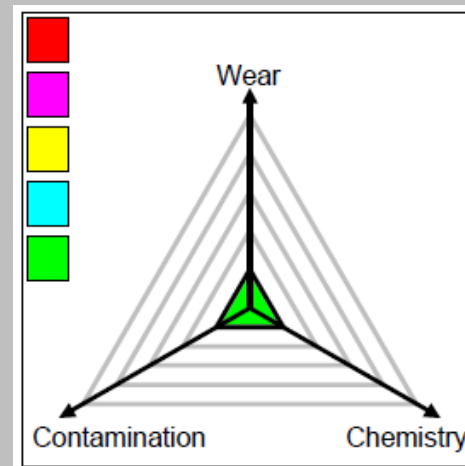
SCA hygiene products

### Current product

460 standard oil

### Solution

**Interflon Grease MP00**



### Result

- No more leaks.
- Wear has been reduced to a minimum.
- Longer service life is expected.



## Application: K series Conveyor gearbox

PAGE 38



### Problem

Oil leaks from gearboxes are not permitted in the food industry. Repair costs £ 400 each time. Gearbox replacement costs £ 600.

### Environment

Hot and high relative humidity.

### Current product

Conventional 220 oil.

### Solution

#### Interflon Food Grease HD00

- Water-resistant, sealing and corrosion-inhibiting.
- Excellent lubricating properties.
- Helps prevent oil leakages.
- High temperatures and rotational speeds.
- Compatible with Li, Ca and Li/Ca greases.
- Suitable for automatic lubrication systems.



Nonfood Compounds  
Program Listed H1  
Registration 122220



### Results:

- Total saving £ 2,200 (6 gearboxes).
- No leakage.
- Fewer oil changes.
- NSF H1 approval.

## Application: KA 87

PAGE 39



### Use

Gearbox KA87 Cheese lift

- Regular oil changes.
- Many leaks.
- No NSF H1.
- High energy consumption.

Drive make: SEW Type: KA87

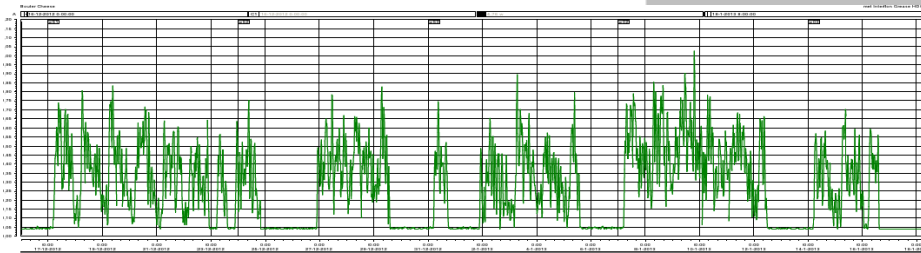
### Company information

Bouter Cheese, cheese products

Current product ; 220 standard oil

### Solution

**Interflon Food Grease HD00**



### Result

- No more leaks.
- An energy saving of 10%.
- Fewer maintenance hours.

## Application: K series gearbox proving cabinet

PAGE 40



### Problem

Make: SEW

Drive power: 7.5 KW

Annual oil changes and an energy saving is important for this bakery.

### Environment

Hot and high relative humidity.

### Current product

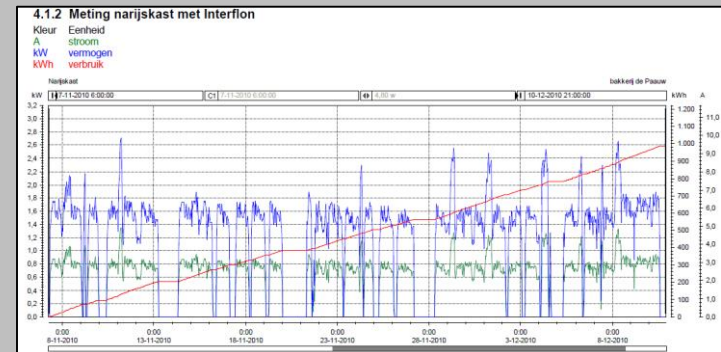
Bel Ray No Tox Gear 90

### Company information

Bakery

### Solution

**Interflon Food Grease 000**



### Results:

- An energy saving of 9.5%.
- Oil change interval is expected to be 5 times longer.
- Saving on the maintenance costs.

## Application: K 127

PAGE 41



### Use

Gearbox K127 for gravel washer drive.

- Regular oil changes.
- Many leaks.

Drive make: SEW Type: K127

### Company information

Dekker concrete products

### Current product

Mobil ISO VG 220

### Solution

**Interflon Finnoly Additive T251**



### Result

- Less wear and tear.
- 2-3 times fewer oil changes.
- Gearbox runs quietly.



## Application: KA 86

PAGE 42



### Use

Gearbox K127 for slag conveyor

- Regular oil changes.
- Many leaks.
- Not enough power from the electric motor because of an increase in production.
- Service life of 3 years.

Quotation for a new motor - gearbox and cabling was € 100,000.

Drive make: SEW Type: KA86  
type 160 mf-4, motor 9.2 kW.

### Company information

Feniks Recycling

### Current product

Texaco Meropa 220

### Solution

Current oil + **5% Interflon Finnoly Additive T251**

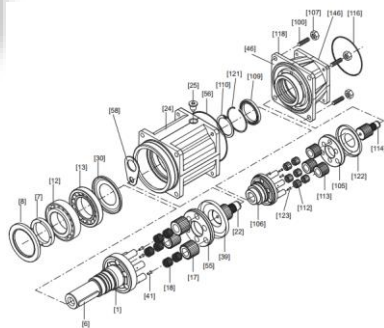
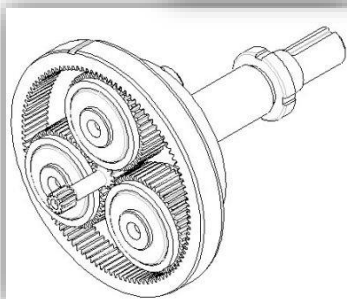
### Result

- More power and no thermal cut-outs.
- Quotation was not taken up.
- Fewer oil changes.



## Application: P = Helical-bevel planetary reductor

PAGE 43



### Liquid grease level required for P = Helical-bevel planetary Reductor

Position A

The same as the recommended level

Position C

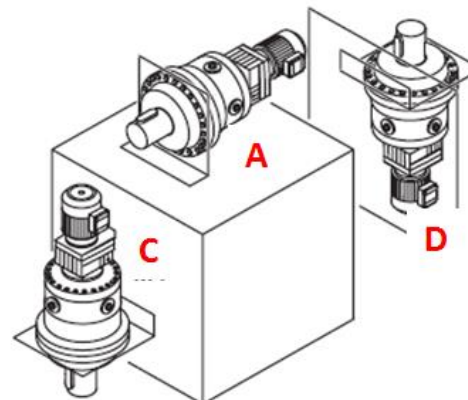
The same as the recommended level

Position D

The same as the recommended level

Warning : some types  
cannot be filled with liquid grease.

For information: Interflon Service lab



## Application: P series

PAGE 44



### Use

Gearbox P Series for glass conveyor.

- Regular oil changes.
- Leaks.
- Objective is to save energy.

Drive make: SEW Type: P Series

### Company information

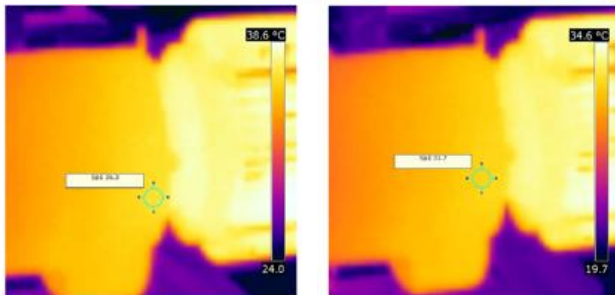
Mars Food Europe BV Food manufacturer

### Current product

220 oil

### Solution

**Interflon Grease MP00**

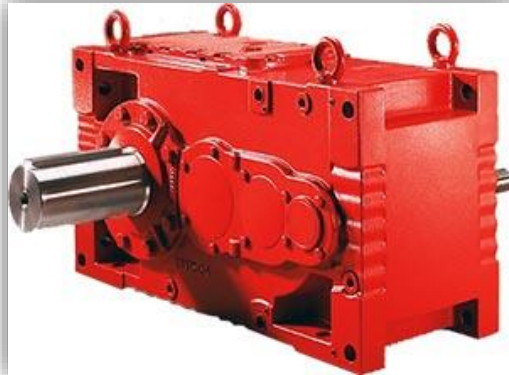


### Result:

- An energy saving of 6%.
- Drop in temperature from 36.3 to 31.7 degrees Celsius.
- No leaks.

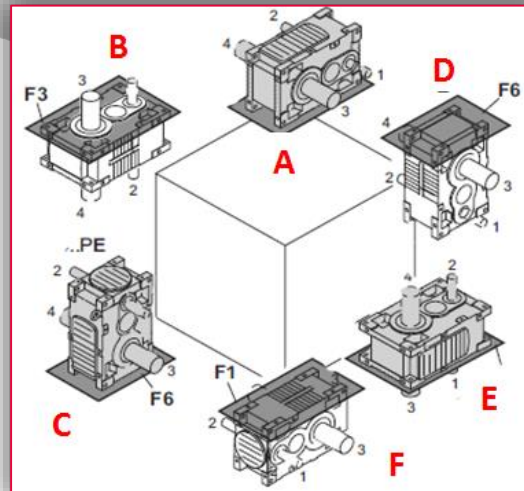
## Application: X = Helical and helical-bevel gear unit

PAGE 45



### Liquid grease level required for X = Helical and helical-bevel gear unit

Position A & F	+ 10% more than the recommended level
Position B & E	The grease level must remain 10 mm below the covering plate.  If the top bearings are lubricated, use the recommended level
Position C & D	Fill the reductor to 80% (to half of the highest shaft)



## Application: X series

PAGE 46



### Use

Gearbox X Series for agitators.

- Regular oil changes.
- Objective is to save energy.
- Revision is every 2 years and the cost of this is € 35,000.

Drive make: SEW Type: X Series

### Company information

DSM SINOCHEM PHARMACEUTICALS NETHERLANDS BV

### Current product

Mobil Gear XP630

### Solution

Current oil + **5% Interflon Finnoly Additive T251**

Zonder Interflon	Stroom [A]	Vermogen [kW]	kWh
Gemiddeld over meetperiode	354	195	-
Maximaal	478	264	-
Totaal			47.474

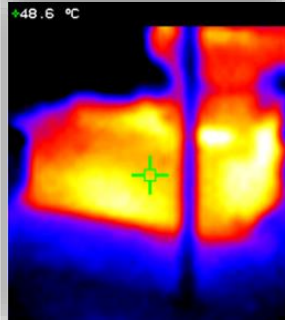
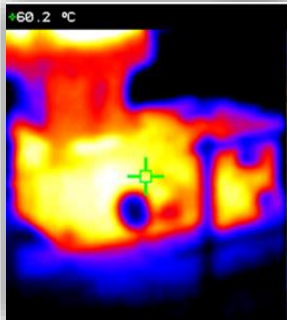
  

Met Interflon	Stroom [A]	Vermogen [kW]	kWh
Gemiddeld over meetperiode	338	186	-
Maximaal	477	263	-
Totaal			43.835 kWh

Measurement period is 1.39 weeks

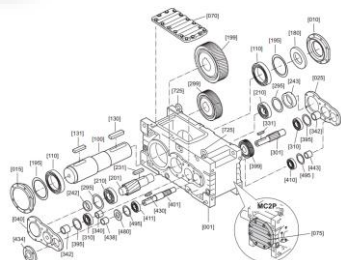
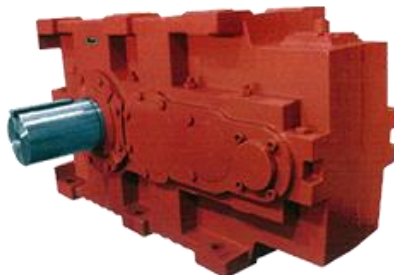
### Result:

- Drop in temperature from 60.2 to 48.6 degrees Celsius.
- An energy saving of 4.5%
- Saving 134,643 kWh per year.



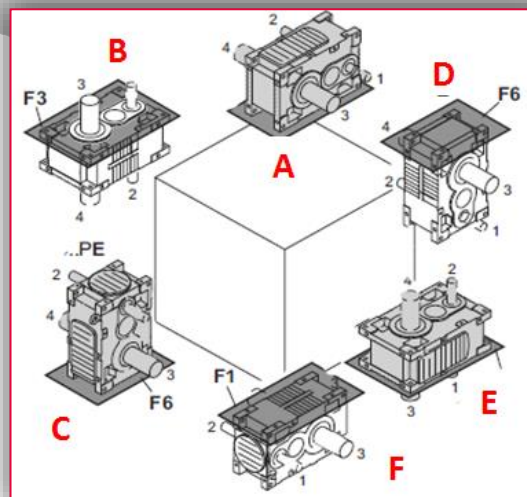
# Application: MC = helical gear units and bevel-helical gear

PAGE 47



## Liquid grease level required for MC = Helical and helical-bevel gear unit

Position A & F	+ 10% more than the recommended level
Position B & E	The grease level must remain 10 mm below the covering plate.  If the top bearings are lubricated, use the recommended level
Position C & D	Fill the reductor to 80% (to half of the highest shaft)





## Application: MC 3P

PAGE 48



### Use

Gearbox MC Series for agitators.

- Regular oil changes.
- Objective is to save energy.

Drive make: SEW Type: MC 3P ES F08

Motor 90 kW

Speed 1,450 rpm

Volume 120 litres.

### Company information

Barry Callebaut chocolate manufacturer.

### Current product

ISO VG 220

### Solution

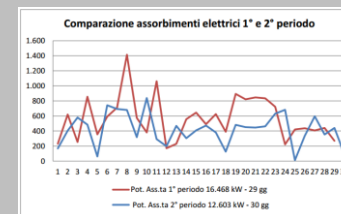
**Interflon Grease MP00**



Potenza elettrica kW (iniziali)	23,70	kW	
Potenza elettrica kW (Interflon®)	17,50	kW	6,20

Consumo kW x ore lavorative= kW (iniziali)	204.768,00	kW	
Consumo kW x ore lavorative= kW (Interflon®)	151.200,00	kW	26,16%

Risparmio annuo totale	9.427,97	€	26,16%
------------------------	----------	---	--------



Red is without Interflon.  
Blue is with Interflon.

### Result

- An energy saving of 26.16%
- Energy saving of €9,427 a year.
- Fewer oil changes.

PAGE 49

**Application: Various gearboxes, total production 558 items**

Page 1-2

Year	kWh	85% Year Power In kWh	Saving with Intertron in %		Number of	Saving in kWh
			7%	1%		
2011	0.25	1241	7%	1	1	7.36
2012	0.25	1241	7%	1	1	7.36
2013	0.25	1241	7%	1	1	7.36
2014	0.25	1241	7%	1	1	7.36
2015	0.25	1241	7%	1	1	7.36
2016	0.25	1241	7%	1	1	7.36
2017	0.25	1241	7%	1	1	7.36
2018	0.25	1241	7%	1	1	7.36
2019	0.25	1241	7%	1	1	7.36
2020	0.25	1241	7%	1	1	7.36
2021	0.25	1241	7%	1	1	7.36
2022	0.25	1241	7%	1	1	7.36
2023	0.25	1241	7%	1	1	7.36
2024	0.25	1241	7%	1	1	7.36
2025	0.25	1241	7%	1	1	7.36
2026	0.25	1241	7%	1	1	7.36
2027	0.25	1241	7%	1	1	7.36
2028	0.25	1241	7%	1	1	7.36
2029	0.25	1241	7%	1	1	7.36
2030	0.25	1241	7%	1	1	7.36
2031	0.25	1241	7%	1	1	7.36
2032	0.25	1241	7%	1	1	7.36
2033	0.25	1241	7%	1	1	7.36
2034	0.25	1241	7%	1	1	7.36
2035	0.25	1241	7%	1	1	7.36
2036	0.25	1241	7%	1	1	7.36
2037	0.25	1241	7%	1	1	7.36
2038	0.25	1241	7%	1	1	7.36
2039	0.25	1241	7%	1	1	7.36
2040	0.25	1241	7%	1	1	7.36
2041	0.25	1241	7%	1	1	7.36
2042	0.25	1241	7%	1	1	7.36
2043	0.25	1241	7%	1	1	7.36
2044	0.25	1241	7%	1	1	7.36
2045	0.25	1241	7%	1	1	7.36
2046	0.25	1241	7%	1	1	7.36
2047	0.25	1241	7%	1	1	7.36
2048	0.25	1241	7%	1	1	7.36
2049	0.25	1241	7%	1	1	7.36
2050	0.25	1241	7%	1	1	7.36
2051	0.25	1241	7%	1	1	7.36
2052	0.25	1241	7%	1	1	7.36
2053	0.25	1241	7%	1	1	7.36
2054	0.25	1241	7%	1	1	7.36
2055	0.25	1241	7%	1	1	7.36
2056	0.25	1241	7%	1	1	7.36
2057	0.25	1241	7%	1	1	7.36
2058	0.25	1241	7%	1	1	7.36
2059	0.25	1241	7%	1	1	7.36
2060	0.25	1241	7%	1	1	7.36
2061	0.25	1241	7%	1	1	7.36
2062	0.25	1241	7%	1	1	7.36
2063	0.25	1241	7%	1	1	7.36
2064	0.25	1241	7%	1	1	7.36
2065	0.25	1241	7%	1	1	7.36
2066	0.25	1241	7%	1	1	7.36
2067	0.25	1241	7%	1	1	7.36
2068	0.25	1241	7%	1	1	7.36
2069	0.25	1241	7%	1	1	7.36
2070	0.25	1241	7%	1	1	7.36
2071	0.25	1241	7%	1	1	7.36
2072	0.25	1241	7%	1	1	7.36
2073	0.25	1241	7%	1	1	7.36
2074	0.25	1241	7%	1	1	7.36
2075	0.25	1241	7%	1	1	7.36
2076	0.25	1241	7%	1	1	7.36
2077	0.25	1241	7%	1	1	7.36
2078	0.25	1241	7%	1	1	7.36
2079	0.25	1241	7%	1	1	7.36
2080	0.25	1241	7%	1	1	7.36
2081	0.25	1241	7%	1	1	7.36
2082	0.25	1241	7%	1	1	7.36
2083	0.25	1241	7%	1	1	7.36
2084	0.25	1241	7%	1	1	7.36
2085	0.25	1241	7%	1	1	7.36
2086	0.25	1241	7%	1	1	7.36
2087	0.25	1241	7%	1	1	7.36
2088	0.25	1241	7%	1	1	7.36
2089	0.25	1241	7%	1	1	7.36
2090	0.25	1241	7%	1	1	7.36
2091	0.25	1241	7%	1	1	7.36
2092	0.25	1241	7%	1	1	7.36
2093	0.25	1241	7%	1	1	7.36
2094	0.25	1241	7%	1	1	7.36
2095	0.25	1241	7%	1	1	7.36
2096	0.25	1241	7%	1	1	7.36
2097	0.25	1241	7%	1	1	7.36
2098	0.25	1241	7%	1	1	7.36
2099	0.25	1241	7%	1	1	7.36
2100	0.25	1241	7%	1	1	7.36

Installed in the following machines:

- Bobst 2000 Flexo
- Bobst 160A
- GKM
- Inliner
- Midline
- Tanabe

## Company information

## Smurfit Kappa corrugated cardboard production



732-651-7070 | sales@sur-sealinc.com

## Application: Various gearboxes, total production 558 items

PAGE 50



Page 2-2

Machines



**TANABE**



**BHS**



Gearbox brand	Number
<b>SEW</b> EURODRIVE	<b>213</b>
<b>Lenze</b>	<b>89</b>
<b>LEROY</b> SOMER	<b>251</b>
<b>NORD</b>	<b>5</b>

Less oil used

75-80% Approx. 1,600 litres.

Total reduction in the number of grease strokes / pumps

27,000/year.

Energy saving

524,000 kWh per year

Energy saving (excluding compressors ) € 44,500 per year  
(excluding pneumatics).

Reduced CO2 emissions

269,000 kg per year

Fewer maintenance hours

680 hours per year

Food Safe NSF H1

Result in €

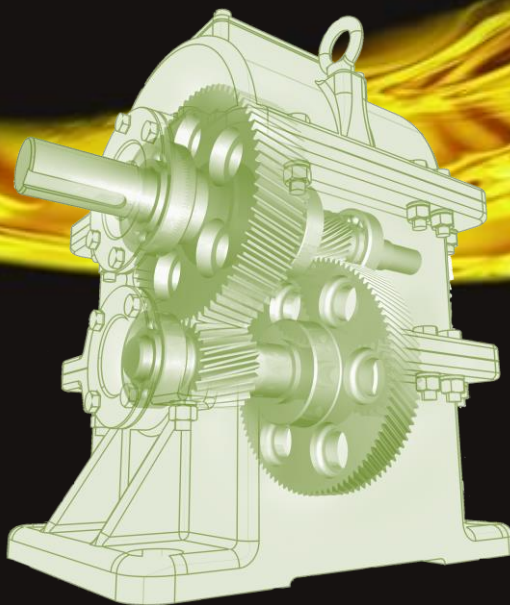
- Lubricants 8,000
- Energy 75,000
- Internal hours 35 23,800
- Components 70,000
- Up-time Approx. 1.5%



732-651-7070 | [sales@sur-sealinc.com](mailto:sales@sur-sealinc.com)

# INTERFLON

**Interflon customer  
experiences with  
type SEW gearboxes**



MicPol® Lubrication Technology  
51